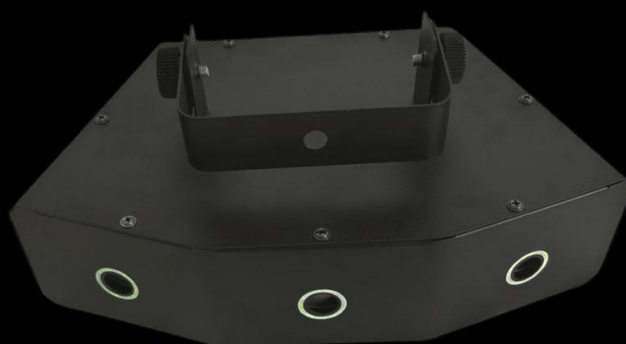


Quick Start Guide

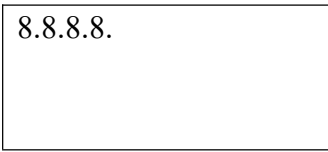
# 3 BOCAS



MACROLITE

[www.macrolite.store](http://www.macrolite.store)

### Illustrationary explanation

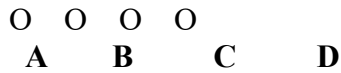


A: Function selection key

B: Add key

C: subtract; reduce; decrease

D: Confirm save



### PARAMETERS:

ated voltage: AC100V~230V 50~60Hz±10%

Rated power: 30W

Laser light source: semiconductor pump laser  
laser laser laser

modulation: TTL Laser

wavelength: 638nm Laser

power: 100mW (50mW\*3PCS)

Laser color: red Laser

system: Precision stepper motor scanning system Laser

effect: laser sky grid beam performance, laser flash,  
flow flash and other effects

control mode: sound control, autonomous, DMX512,  
master-slave effect

DMX channel: 8 channels can be selected for use

environment Indoor applicable

places: bar, KTV, performance bar, dance hall,

hotel banquet hall, entertainment venue,

etc. Working temperature: -20°C~55°C

#### 一、 Function Settings

MENU is the menu switch key, UP and DOWN are the value switch keys,

Channe 1	Value	Function Description
CH1	0~255	Total dimming
CH2	0~255	Dimming for the first red laser
CH3	0~255	Dimming for the second red laser
CH4	0~255	Dimming for the third red laser
CH5	0~4	No stroboscope

	5~255	Red laser stroboscope; the larger the channel value, the faster the stroboscope speed
CH6	0~4	Motor stops
	5~255	Motor positioning
CH7	0	CH6 is valid
	1~127	Motor rotates clockwise; the larger the channel value, the faster the speed
	128~255	Motor rotates counterclockwise; the larger the channel value, the slower the speed
CH8	0~50	CH1~CH5 are valid
	51~255	Macro function

and ENTER is the confirm key.

## 二 、 DMX Control

Menu	Value	Description
A1	1~9	The first red laser is on, the motor speed increases from slow to fast
A2		The second red laser is on, the motor speed increases from slow to fast
A3		The third red laser is on, the motor speed increases from slow to fast
A4		Three red lasers jump, the motor speed increases from slow to fast
A5		Laser stroboscope, and the motor speed increases from slow to fast
S1	1~9	Sound control effect 1, motor rotates slowly without sound control
S2		Sound control effect 2, light off without sound control
D	001~512	DMX or slave machine



experience the light.

MACROLITE

---

[www.macrolite.store](http://www.macrolite.store)

© MACROLITE is a registered trademark

Document Number 001|Vs1|28.Feb 2026

Specifications subject to change without prior notice.